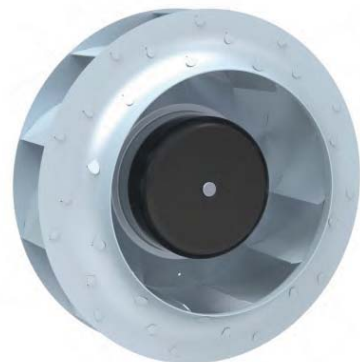


DC Backward Centrifugal Fan with Metal Impeller

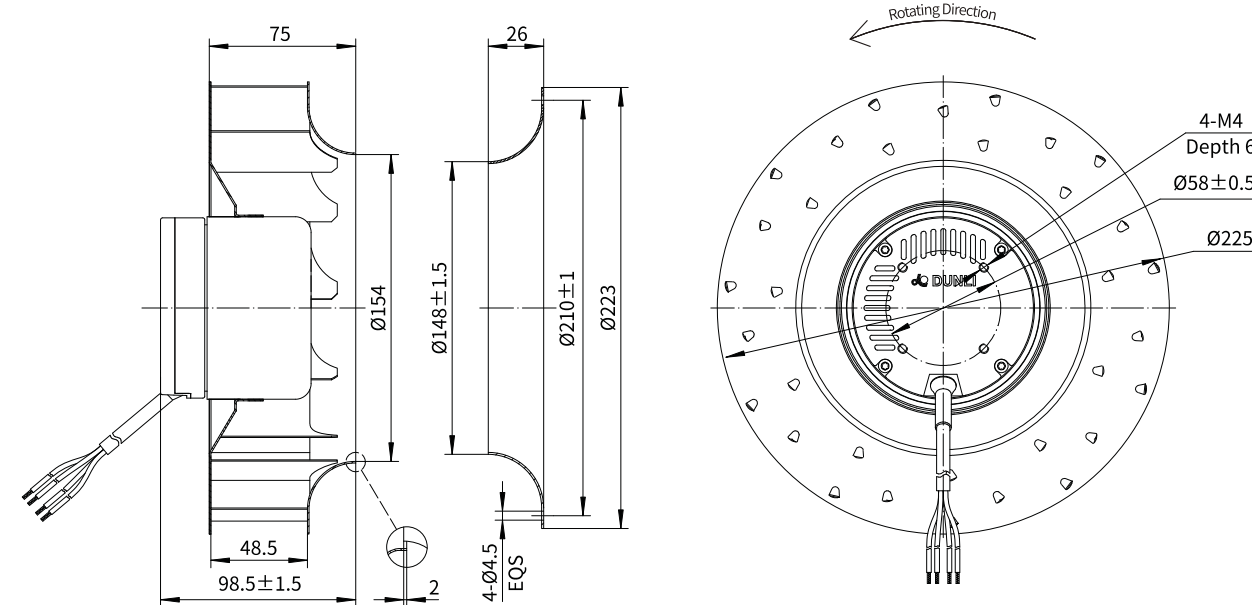
Erp2015
EXCEEDS THE NORM

Motorized Backward Curved Impeller

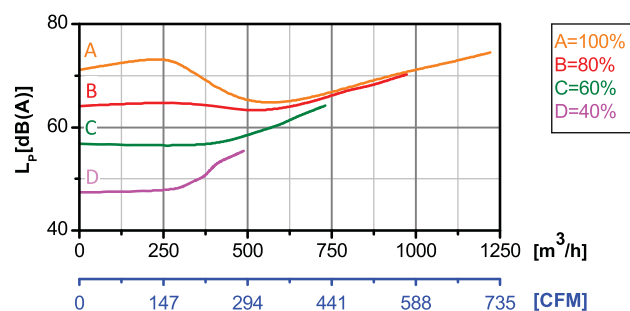
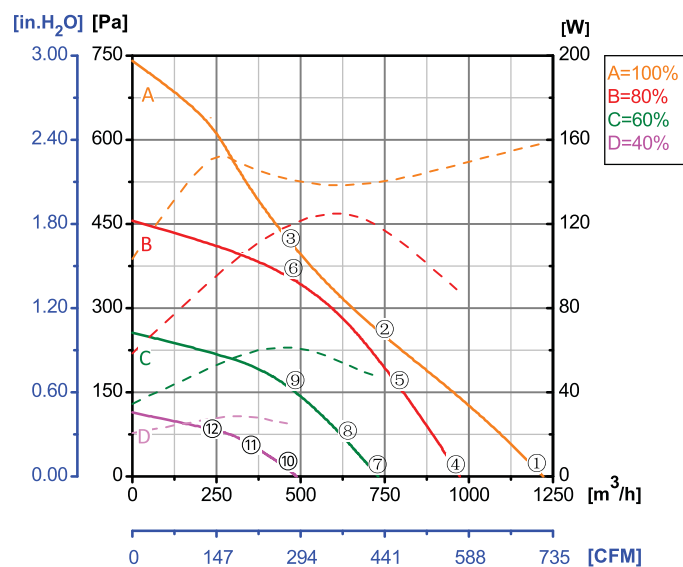


Φ 225

Rotor Material: Carbon steel
Impeller Material: Galvanized steel sheet
Ingress Protection: IP42
Insulation Class: F
Bearing Type: Maintenance free ball bearing



Performance Curves



Test Point	Speed	Input Power
	rpm	W
1	3331	158
2	2818	140
3	2813	140
4	2661	88
5	2663	111
6	2660	122
7	1999	47
8	1997	53
9	1996	61
10	1327	24
11	1334	26
12	1331	28

Erp2015 Data:
Efficiency η_{statA} = 45.7%
Efficiency grade N_{actual} = 65.2, N_{target} = 62
Test report No. : L-20210302-005-103

Model No.	Voltage	Frequency	Speed	Input Power	Current	Working Temp.	Approvals
	VAC	Hz	RPM	W	A	Min/Max (°C)	
DC92-B225-C10	48	/	3250	155	3.23	-20/+60	CCC,CE
DC92-B225-D10	310	/	3250	155	0.50	-20/+60	CCC,CE