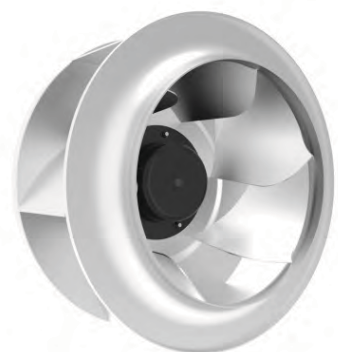


EC Backward Centrifugal Fan with Metal Impeller

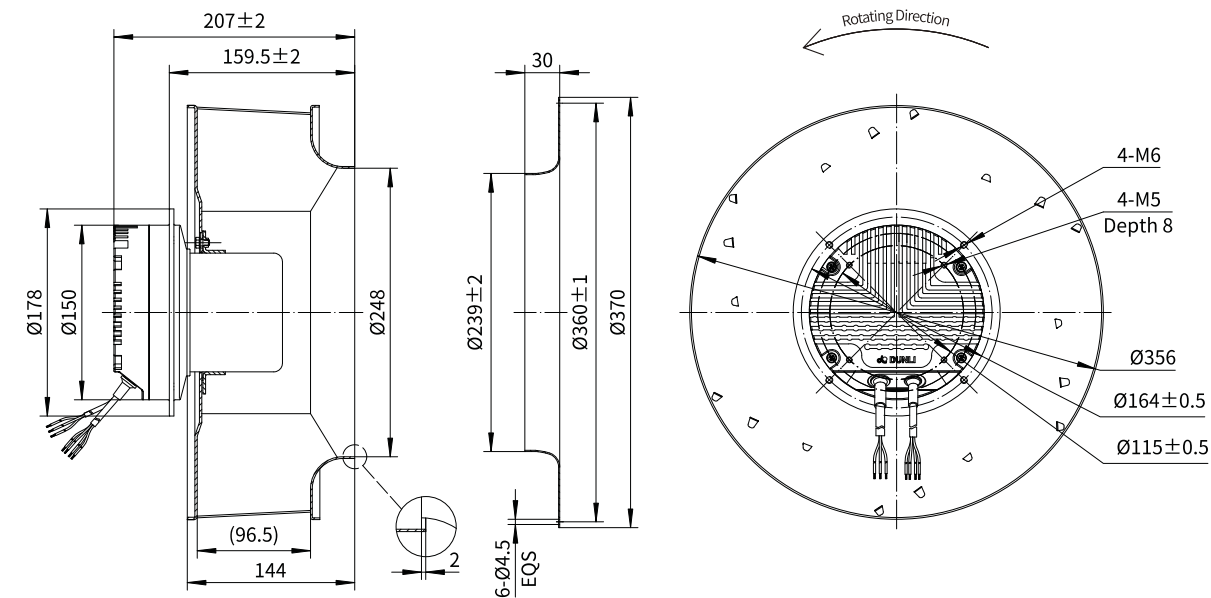
Erp2015
EXCEEDS THE NORM

Motorized Backward Curved Impeller

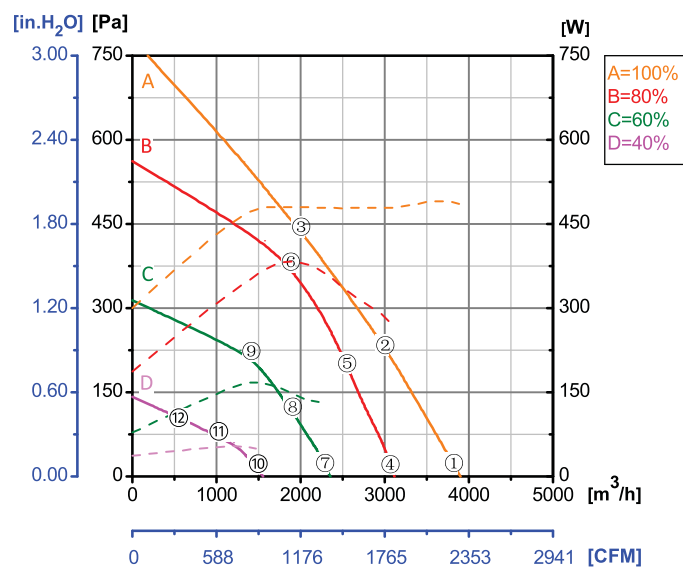


Φ 355-H

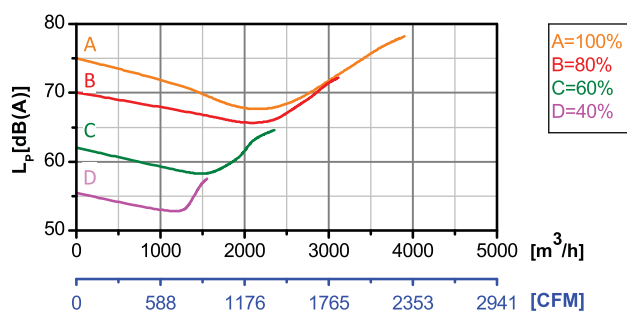
Rotor Material: Carbon steel
Impeller Material: Aluminum alloy sheet
Ingress Protection: IP54
Insulation Class: F
Bearing Type: Maintenance free ball bearing



Performance Curves



Test Point	Speed	Input Power
	rpm	W
1	2279	486
2	2129	477
3	1968	480
4	1825	263
5	1820	321
6	1825	386
7	1367	118
8	1367	144
9	1372	168
10	910	46
11	911	51
12	913	52



Erp2015 Data:
Efficiency η_{statA} = 56.4%
Efficiency grade N_{actual} = 70.2, N_{target} = 62
Test report No. : L-20210302-005-050

Model No.	Voltage	Frequency	Speed	Input Power	Current	Working Temp.	APPROVALS
	VAC	Hz	RPM	W	A	Min/Max (°C)	
EC102-B355-039	1~220/230	50/60	2100	440	1.90	-20/+60	CCC,CE